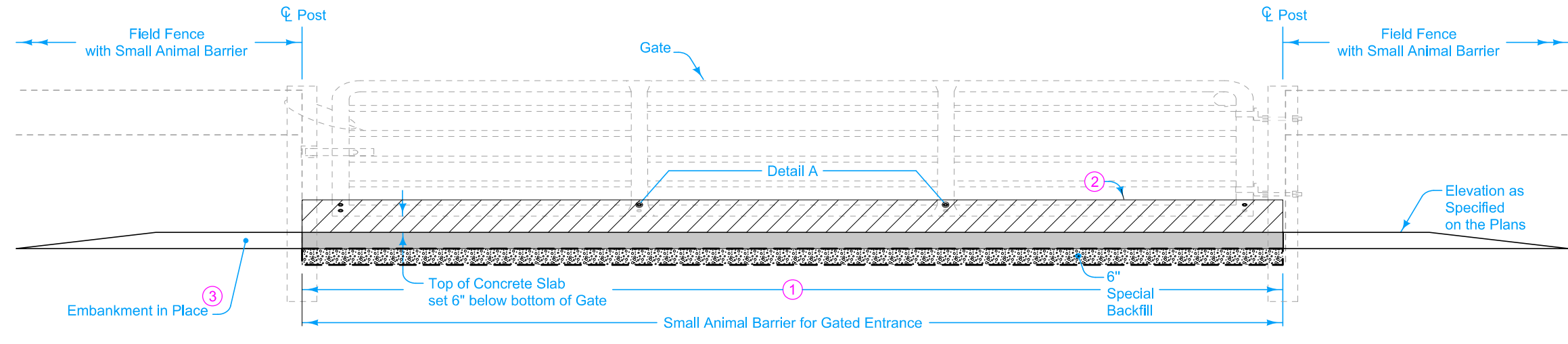
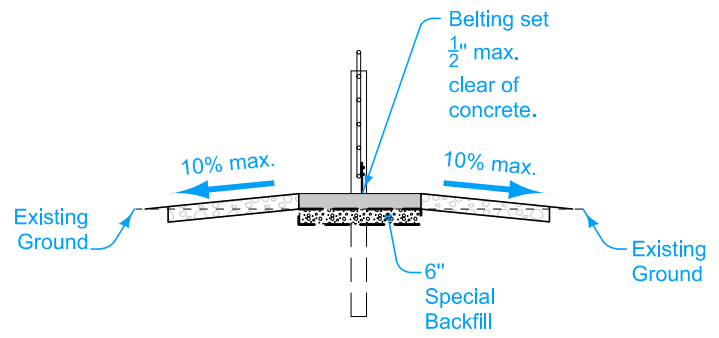


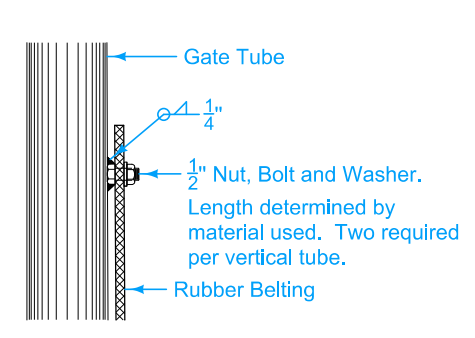
PLAN



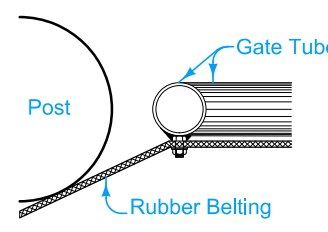
ELEVATION



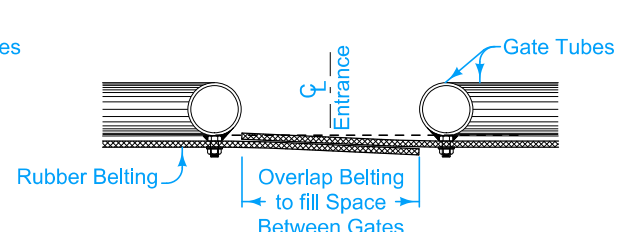
SECTION A-A



DETAIL 'A'



BRACE POST



DOUBLE GATE

BELTING OVERLAP

Construct "Small Animal Barrier for Gated Entrance" at specified locations to provide access through the "Small Animal Barrier".

Place "Portland Cement Concrete Driveway" to elevation specified on the plans.

Each "Small Animal Barrier for Gated Entrance" correctly installed will be counted for payment.

Payment will be the contract unit price for each "Small Animal Barrier for Gated Entrance" installed correctly.

Payment includes all materials, tools and labor required to construct "Small Animal Barrier for Gated Entrance" as detailed.

- ① P.C. Concrete Driveway: Gate Width + 12 inches by 4'-0" along centerline of entrance by 6 inches thick.
- ② Rubber Belting: 12 inches wide by $\frac{1}{4}$ inch thick (min.) Fabric Reinforced Rubber Belting bolted to Gate as shown in Detail A. Length is Gate Width + 12 inches.
- ③ Transition into natural ground.

Possible Contract Item:
Small Animal Barrier for Gated Entrance

Incidental to Small Animal Barrier for Gated Entrance:
Driveway Surfacing, Class 'A' Crushed Stone
Embankment In Place
Portland Cement Concrete Driveway, 6 inch
Rubber Belting
Special Backfill

Possible Tabulation:
100-7

 ROAD DESIGN DETAIL	REVISION	
	NEW	10-19-10
	510-05 SHEET 1 of 1	
REVISIONS: New.		
<p align="center">SMALL ANIMAL BARRIER FOR GATED ENTRANCE</p>		